

# What do I do with this stuff?



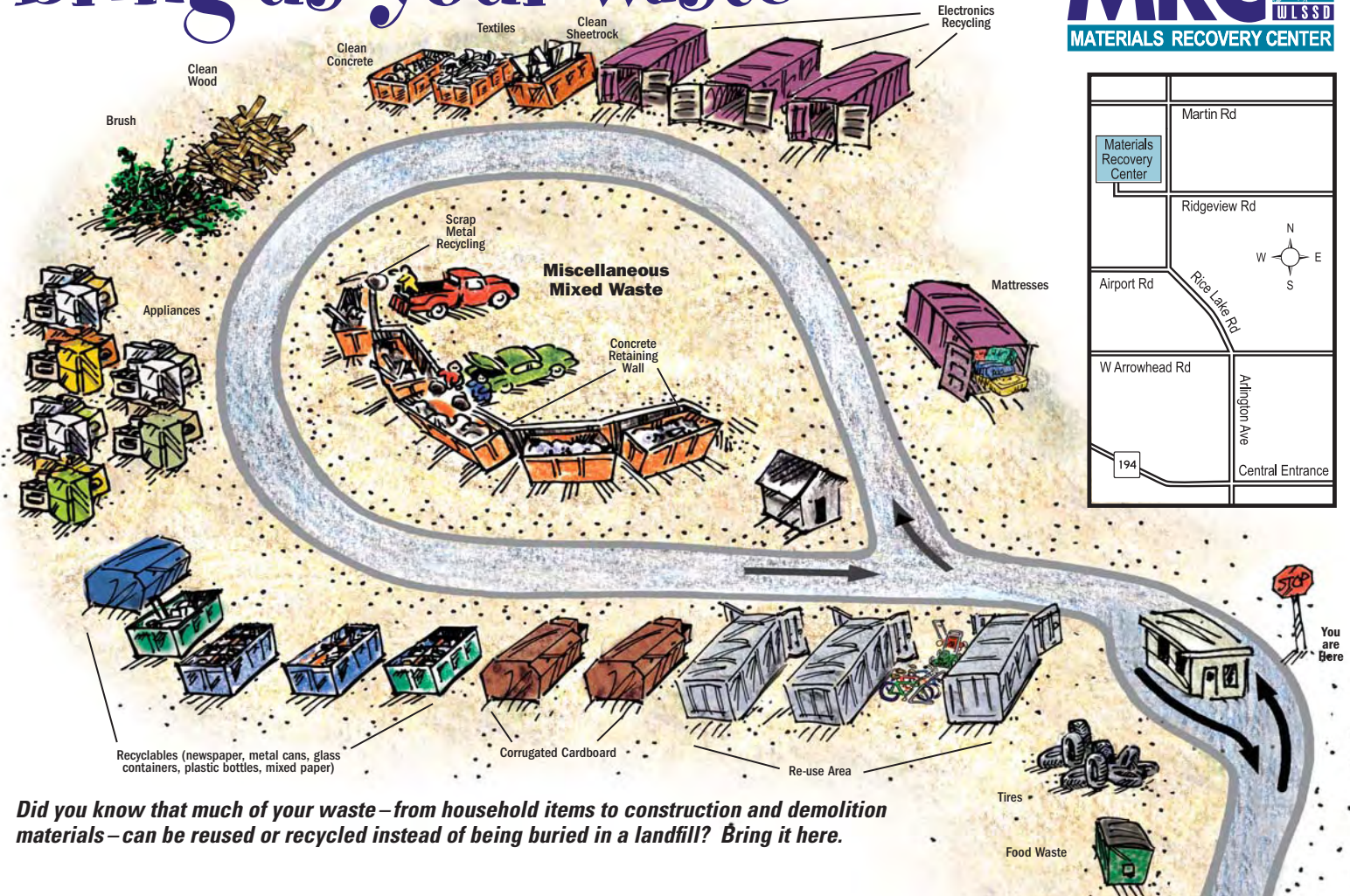
## Bring it here!

The **Materials Recovery Center (MRC)**, at the corner of Rice Lake and Ridgeview Roads, is the place to bring your "stuff" for recycling, reuse and disposal. It's easy. And, you can save money by helping to recover resources from waste rather than throwing them in the trash!

Simply drive around the loop and drop your materials in the areas specially marked for recycling, reuse and disposal. We accept some materials for free, and we charge less for other recoverable materials when they are sorted out for recycling.



# Bring us your waste



**Did you know that much of your waste—from household items to construction and demolition materials—can be reused or recycled instead of being buried in a landfill? Bring it here.**

# What can you drop off at the Materials Recovery Center?

Ridgeview Road

Rice Lake Road →

## Recoverable material .....\$10/cubic yard

- Clean wood (no green treated, laminate, plywood, chipboard, paint or stains)
- Clean sheetrock (no tape or paint)
- Clean concrete (no rebar or embedded materials)
- Textiles, yard equipment, bikes

## Miscellaneous mixed waste .....\$20/cubic yard

- Mixed construction and demolition loads (i.e. concrete, brick, wood, plastic, shingles)
- Large household items (i.e. broken furniture, old carpeting)

## Brush .....\$ 8/cubic yard

## Wood ashes .....FREE

## Scrap metal .....FREE

## Recyclables\* .....FREE

*These items must be placed in separate bins.*

- Clear glass (rinsed)
- Brown glass (rinsed)
- Green glass (rinsed)
- Tin and aluminum cans (rinsed)
- Plastics #1 through #7 (rinsed)
- Newspaper
- Mixed paper (junk mail; magazines; letter & printer papers; phone books; softcover & hardcover books; cereal, soda & pasta boxes, etc.)
- Corrugated cardboard, cut to 4' x 4' or smaller

## Tires\* .....4 Free Per Day

*Additional tires are \$2 each.*

## Appliances\* .....\$10 each

### Residential Electronics

- Small electronics and rechargeable batteries.....FREE
- CPU, fax, printer, laptop .....\$ 2 each
- All TVs, Monitors, and other electronics with display screens 7" or larger.....\$ 5 each

### Mattresses & Boxsprings

- Dry pieces .....\$ 7 each
- Wet pieces .....\$ 8 each

## Food waste (in compostable bags) .....FREE

### **Cash and personal checks accepted.**

### **Not accepted:**

- Household garbage
- Household hazardous waste (Bring to WLSSD's HHW Facility\*\*)
- Leaves or compost material (Bring to WLSSD's Yard Waste Composting Site\*\*)

*\* Some restrictions apply for businesses.*

*\*\* Located at 2626 Courtland Street in Duluth.*

**Please use the facility in a safe manner.  
Staff do not load or unload vehicles.**

## OPERATING HOURS

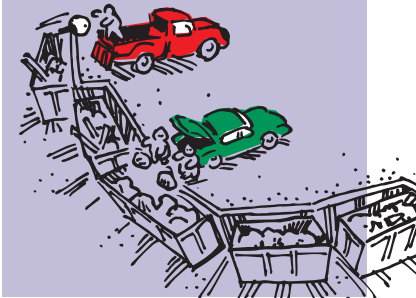
### Summer (April – October)

Mon., Tues.	8 a.m. to 5 p.m.
Wed., Thurs.	Closed
Fri., Sat.	8 a.m. to 5 p.m.
Sun.	Noon to 5 p.m.

### Winter (November – March)

Mon., Tues.	9 a.m. to 3 p.m.
Wed., Thurs.	Closed
Fri., Sat.	9 a.m. to 3 p.m.
Sun.	Noon to 3 p.m.

**Call for holiday hours 722-0761**



# MRC: The smart, easy place for waste disposal.

## Simple tips to make your trip to the MRC easy

### *Sorting saves time and money*

You'll pay less when you sort out items like clean sheetrock, concrete and clean wood for recovery, rather than dumping them as unsorted Mixed Waste (See price list inside).

You'll save time, too, when you pack your vehicle with unloading in mind. For instance, pack tires and appliances on the bottom or at the front of your load, because you'll unload these items last. You can pack mixed waste, electronics and brush on the top or near the back of your load, because you'll unload these items first (See map inside for details).

### *How much is a cubic yard?*



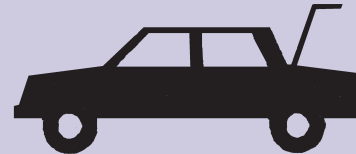
Average full size pickup bed holds **approximately 2 cubic yards.\***



Average trailer bed holds **approximately 2 cubic yards.\***



Average compact/small pickup bed holds **approximately 1 to 1 1/2 cubic yards.\***



Average automobile trunk holds **approximately 1/2 cubic yard.\***

\*Based on level loads – not heaping. All loads are subject to measurement.



**QUESTIONS?**  
Call the WLSSD Hotline  
**722-0761**

Or visit our Web site  
[www.wlssd.com](http://www.wlssd.com)

The Materials Recovery Center is a program of the Western Lake Superior Sanitary District



RECYCLED PAPER, MADE FROM 100% POST-CONSUMER WASTE



PROCESSED CHLORINE-FREE AND ACID-FREE